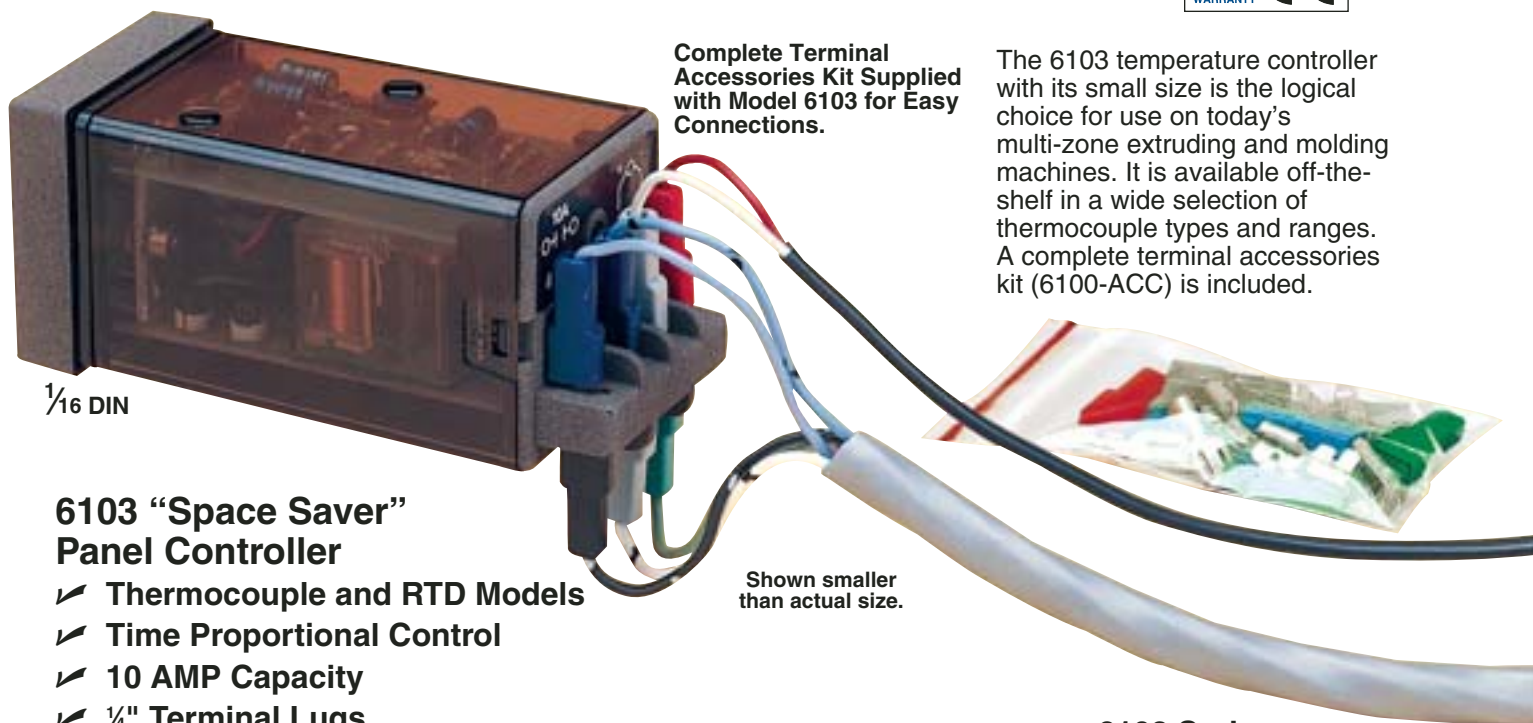


1/16 DIN Temperature Controllers

Low Cost Space Saving Systems



Complete Terminal Accessories Kit Supplied with Model 6103 for Easy Connections.

The 6103 temperature controller with its small size is the logical choice for use on today's multi-zone extruding and molding machines. It is available off-the-shelf in a wide selection of thermocouple types and ranges. A complete terminal accessories kit (6100-ACC) is included.

1/16 DIN

6103 "Space Saver" Panel Controller

- ✓ Thermocouple and RTD Models
- ✓ Time Proportional Control
- ✓ 10 AMP Capacity
- ✓ 1/4" Terminal Lugs

Shown smaller than actual size.

6103 Series
\$149

Time Proportional Control



Shown smaller than actual size.

1/16 DIN

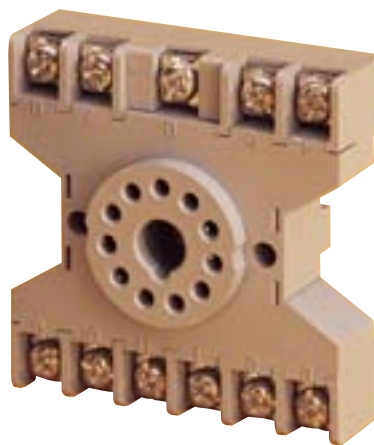
6102 Socket Mount Controller

- ✓ 1/16 DIN Panel Cutout
- ✓ Thermocouple and RTD Models
- ✓ Time Proportional Control
- ✓ 10 AMP Capacity
- ✓ 11-Pin Connector

6132 Series
\$145

On/Off Control

The 6102 temperature controller is one of OMEGA's lowest cost units with all the features of big controllers. Packaged in a small size to save you space and money, 6102 controllers plug into an unbreakable nylon socket which can be mounted individually or snapped onto the 6000-TRK mounting track. The unbreakable nylon socket and mounting track make installations in chassis, control panel and O.E.M. applications fast and easy, using a minimum of space.



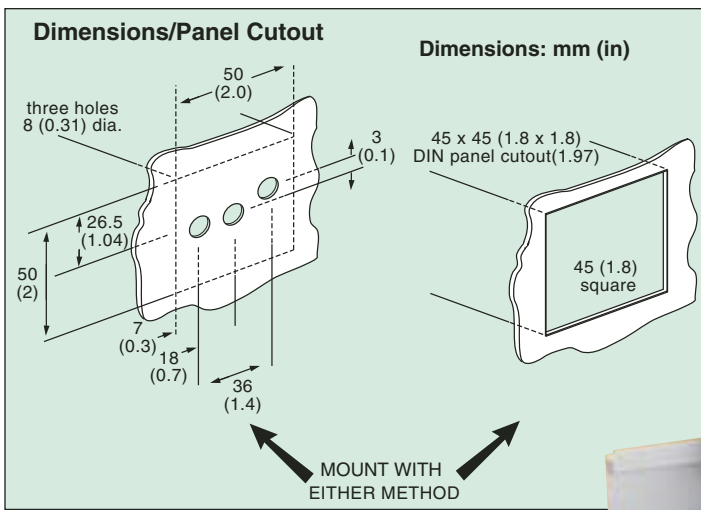
Panel punches available, visit omega.com/panelpunches

The 6102 is supplied as a complete system with socket.

Replacement socket available, 6102-SKT (\$8)

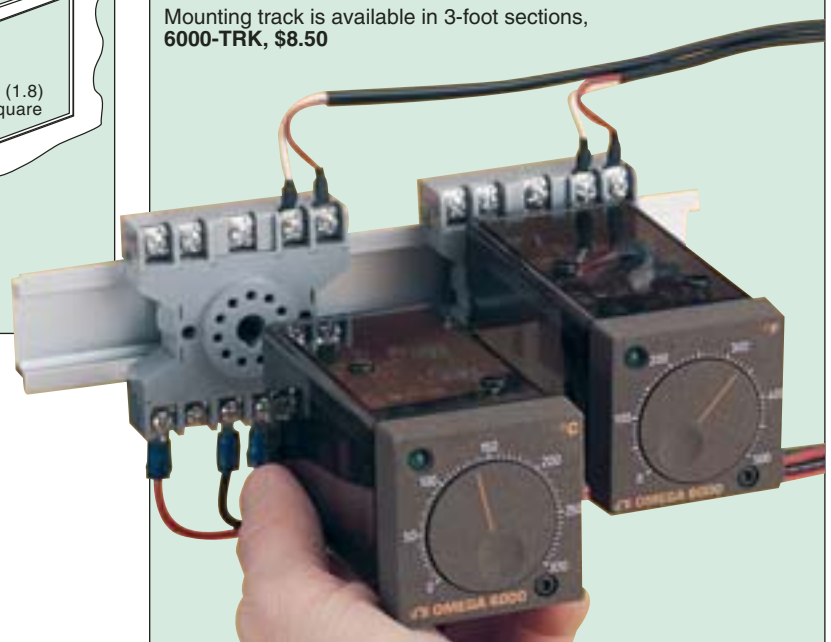
6102 Series
\$145

Time Proportional Control



Track Mounting

Mounting track is available in 3-foot sections, **6000-TRK, \$8.50**



Specifications

Electrical

Supply Voltage: 115 Vac (-15% +20%), 50/60 Hz (optional)
230 Vac

Power Consumption: 2 VA

Output: 10 A relay, SPST with power internally wired to contacts; 5 A relay, SPDT for 6132H

Control

Calibration Accuracy: ±2% of scale span or 4°C, whichever is greater (from 10 to 90% of scale span)

Linearity-Resolution: Linearity 6%, resolution 1% max, of scale span (dependent on sensor/range)

Control Accuracy: ±0.4% of full scale at an ambient of 22°C (72°F); ±2°C (3.6°F), at rated line voltage, after 30 minutes setting time; cycle time: 25 s, approx.

Control Modes

Time Proportional: Proportional with accelerated response to temperature variations; 3.5% band

On/Off: Model 6132H only; 4°C (7°F) differential

Input

Thermocouple: J, K, S

External resistance: Max 100 Ω

Cold Junction Compensation: Automatic

Common Mode: Negligible effect up to 270V 50/60 Hz

Series Mode: Negligible effect up to scale spread mV equivalent at 50/60 Hz

Sensor Break Protection:

Automatic upscale

RTD Sensor: 100 Ω platinum
α=0.00385

General

Indication: A high brightness LED shows Heat ON

Ambient Temperature: 0 to 50°C (32 to 122°F)

Suppression: Filtering is provided for line and sensor input interference

Dimensions: 48 H x 48 W x 98 mm D (1.89 x 1.89 x 3.86")

Construction: Flame retardant polycarbonate and ABS. Bezel and knob coated with Nextel

Connections: 6 mm (¼") standard terminal lugs or 11-pin connector

Weight: 200 g (7 oz)



OMEGACARESM extended warranty program is available for models shown on this page. Ask your sales representative for full details when placing an order. OMEGACARESM covers parts, labor, and equivalent loaners.

MOST POPULAR MODELS HIGHLIGHTED!

To Order (Specify Model Number)					
Proportional Control		On/Off Control		Input Type	Range
Socket Mount \$145	Quick Disconnect \$149	Socket Mount \$145			
6102J-0-300F	6103J-0-300F	6132H-J-0-300F	J	0 to 300°F	
6102J-0-500F	6103J-0-500F	6132H-J-0-500F		0 to 500°F	
6102J-0-1000F	6103J-0-1000F	6132H-J-0-1000F		0 to 1000°F	
6102J-0-300C	6103J-0-300C	6132H-J-0-300C		0 to 300°C	
6102K-0-500F	6103K-0-500F	6132H-K-0-500F	K	0 to 500°F	
6102K-0-1000F	6103K-0-1000F	6132H-K-0-1000F		0 to 1000°F	
6102K-0-1500F	6103K-0-1500F	6132H-K-0-1500F		0 to 1500°F	
6102K-0-1200C	6103K-0-1200C	6132H-K-0-1200C		0 to 1200°C	
6102S-0-1600C	6103S-0-1600C	6132H-S-0-1600C	S	0 to 1600°C	
6102RTD-0-600C	6103RTD-0-600C	6132H-RTD-0-600C	RTD	0 to 600°C	

Accessory

Model No.	Price	Description
DPP-4	\$475	1/16" DIN panel punch

Comes complete with operator's manual.

To order, specify Model No. and range (from chart above.) To order 230V, add suffix "-230V" to model number; no additional charge.

Ordering Examples: 6132H-J-0-300C-230V, On/Off Controller with socket mounting and 230 Vac power, \$145. OCV-3 extends standard 3-year warranty to a total of 5 years (\$36), \$145 + 36 = \$181. 6102J-0-1000F, proportional controller with socket mounting, \$145.

For Additional Controllers and Indicators, See Section M





UNITED STATES

www.omega.com
1-800-TC-OMEGA
Stamford, CT.

CANADA

www.omega.ca
Laval(Quebec)
1-800-TC-OMEGA

GERMANY

www.omega.de
Deckenpfronn, Germany
0800-8266342

UNITED KINGDOM

www.omega.co.uk
Manchester, England
0800-488-488

FRANCE

www.omega.fr
Guyancourt, France
088-466-342

CZECH REPUBLIC

www.omegaeng.cz
Karviná, Czech Republic
596-311-899

BENELUX

www.omega.nl
Amstelveen, NL
0800-099-33-44



More than 100,000 Products Available!

• Temperature

Calibrators, Connectors, General Test and Measurement Instruments, Glass Bulb Thermometers, Handheld Instruments for Temperature Measurement, Ice Point References, Indicating Labels, Crayons, Cements and Lacquers, Infrared Temperature Measurement Instruments, Recorders Relative Humidity Measurement Instruments, RTD Probes, Elements and Assemblies, Temperature & Process Meters, Timers and Counters, Temperature and Process Controllers and Power Switching Devices, Thermistor Elements, Probes and Assemblies, Thermocouples Thermowells and Head and Well Assemblies, Transmitters, Wire

• Flow and Level

Air Velocity Indicators, Doppler Flowmeters, Level Measurement, Magnetic Flowmeters, Mass Flowmeters, Pitot Tubes, Pumps, Rotameters, Turbine and Paddle Wheel Flowmeters, Ultrasonic Flowmeters, Valves, Variable Area Flowmeters, Vortex Shedding Flowmeters

• pH and Conductivity

Conductivity Instrumentation, Dissolved Oxygen Instrumentation, Environmental Instrumentation, pH Electrodes and Instruments, Water and Soil Analysis Instrumentation

• Data Acquisition

Auto-Dialers and Alarm Monitoring Systems, Communication Products and Converters, Data Acquisition and Analysis Software, Data Loggers Plug-in Cards, Signal Conditioners, USB, RS232, RS485 and Parallel Port Data Acquisition Systems, Wireless Transmitters and Receivers

• Pressure, Strain and Force

Displacement Transducers, Dynamic Measurement Force Sensors, Instrumentation for Pressure and Strain Measurements, Load Cells, Pressure Gauges, Pressure Reference Section, Pressure Switches, Pressure Transducers, Proximity Transducers, Regulators, Strain Gages, Torque Transducers, Valves

• Heaters

Band Heaters, Cartridge Heaters, Circulation Heaters, Comfort Heaters, Controllers, Meters and Switching Devices, Flexible Heaters, General Test and Measurement Instruments, Heater Hook-up Wire, Heating Cable Systems, Immersion Heaters, Process Air and Duct, Heaters, Radiant Heaters, Strip Heaters, Tubular Heaters